

SAN BERNARDINO Mountains

BIG BEAR LAKE • CRESTLINE • LAKE ARROWHEAD

Traveler Info Guide

VISITOR SERVICES WATER SPORTS ATTRACTIONS
SIGHTSEEING LODGING DINING HELPFUL NUMBERS



Big Bear Lake California

visitor**tips**.com

www.VisitorTips.com/tig/sanbernardino

CRESTLINE / LAKE ARROWHEAD / BIG BEAR LAKE POINTS OF INTEREST

CRESTLINE

Lake Gregory Regional Park
has a public beach with lifeguards. Admission fee includes volleyball and picnic facilities. 300-foot waterslide for an additional fee. Year-round fishing, bait shop, boating, exercise/walking trail, horseshoe pits, ball fields, snack bar. Skateboard park across the street. Located in Crestline at corner of Lake Gregory Drive and Lake Drive. 909-338-2233

Lake Gregory Fitness Trail
The 2.5 mile scenic trail around Lake Gregory is an excellent place to get a full workout in the cool mountain air. There are 10 fitness stations where runners or walkers may stop to do a variety of stretching, agility and exercises. Free parking lots located on Lake Drive and San Moritz Drive. Located in Crestline at corner of Lake Gregory Drive and Lake Drive. 909-338-2233

Lake Gregory Beach Club
Open seasonally for all your beach needs: swimwear, lotion, etc. Located on north shore beach. Historic Crestline Theatres and Movie Museum located in downtown Crestline. 23955 Lake Drive.

Lake Silverwood
Located minutes away from Crestline on Hwy. 138 offering boating, fishing, swimming and camping. Park Office: 760-389-2281, Marina 760-389-2299, Camping 800-444-7275

LAKE ARROWHEAD Fire Lookout Towers
are volunteer staffed 7 days a week, usually from Memorial Day - November. Visitors are welcome to experience the lookout towers which offer a 360 degree view of the surrounding area. Early morning is best. Volunteers are on duty 9-5. Contact the Arrowhead ranger station for more information. 909-382-2782

Lake Arrowhead Village
is located on Lake Arrowhead and offers something for everyone in the family! Aside from the fabulous view, visitors will find factory outlets, galleries, boutiques, gift and specialty stores, restaurants, professional services, supermarket and even a kids fun park! Special events throughout the year including the entertainment and free concerts. Located on Hwy. 189 in Lake Arrowhead. Open daily. 909-337-2533

Ice Castle Int'l Training Center
Nestled in the woods at 5,400 feet near Lake Arrowhead, the Ice Castle features an ice surface measuring 85 by 185 feet. World-renowned coaches offering private and group lessons. Recreational skating sessions available in the afternoon or evenings. Rental skates available. Call for more information. 909-337-0802

Children's Forest

Located in the San Bernardino Forest, Hwy. 18, near Sky Forest, a 3,400 acre site with trails and interpretive exhibits. 909-867-5996

Mountain Skies Astronomical Society
Starwatches, science center, workshops. 2001 Observatory Way off Hwy. 18, Lake Arrowhead. 909-336-1699

Lake Arrowhead Queen
offers guided boat tours of Lake Arrowhead. Experience the beauty and excitement of a narrated tour of Lake Arrowhead. Tours operate year-round, weather permitting. Located dock side, Lake Arrowhead Village. 909-336-6992

Blue Jay Mall
has a large variety of services including Alpine Jewelers and Boutique. 909-337-1516

Blue Jay Cinema 4
offers four big screens showing current movies year-round. Located at the corner of Hwy. 189 and North Bay Road in Blue Jay. Call 909-337-8404 for movie listing and times or visit their website: www.themovieexperience.com

RUNNING SPRINGS

Snow Valley Mountain Resort
Closest ski resort to the valley floor offering 12 lifts and up to 240 acres of terrain. Dedicated snowboard parks. Winter - skiing, snowboarding, snow play / sledding area and mini-snowmobile park for children. Summer - concerts and other mountain activities. Located 5 miles east of Running Springs on Hwy. 18. 909-867-2751 or 800-680-SNOW or visit our website at www.snow-valley.com

Rim Nordic Ski Area
offers cross country skiing and snow shoeing. Located on Hwy. 18, 5 miles east of Running Springs across from Snow Valley Mountain Resort. Summer activities include mountain bike racing and trail runs. Call 909-867-2600 for information.

BIG BEAR LAKE

Alpine Slide
at Big Bear Lake's Magic Mountain is open all year and is Southern California's only authentic bobsled experience. Begin with a scenic chairlift ride to the top. From there, riders navigate their own individually-controlled sleds down two quarter-mile long cement tracks, filled with high-banked turns and long straightaways. Fee. 909-866-4626



Anaheim	64	Palm Springs	67
Big Bear	31	San Bernardino	18
Lake Arrowhead	9	San Diego	124
Los Angeles	77	Victorville	40

HELPFUL TELEPHONE NUMBERS

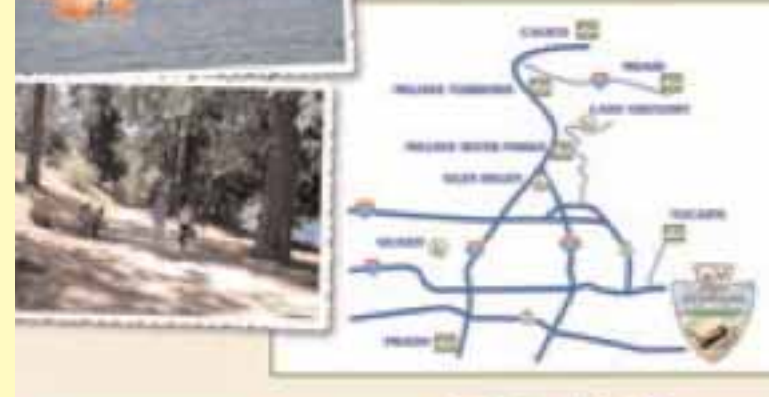
All Emergencies	911
Lake Arrowhead Fire District	909-337-8586
Crest Forest Fire District	909-338-3311
Running Springs Fire Department	909-867-2630
CA Department of Forestry (CAL FIRE)	909-883-1112
US Forest Service	909-383-5651
California Highway Patrol	909-867-2791
Sheriff's Department	909-336-0600
Mountain Community Hospital	909-336-3651
CalTrans Road Conditions	800-427-7623
Blue Jay Cinema	909-337-8404
Lake Arrowhead Village	909-337-2533
MARTA Dial-A-Ride	909-338-1113
Crestline Chamber	909-338-2706
Lake Arrowhead Chamber	909-337-3715
Running Springs Chamber	909-867-2411
San Bernardino County Regional Parks	909-387-2757
Campgrounds	
Crab Flats (year-round) - Green Valley Lake	800-444-7275
Dogwood (seasonal) - Lake Arrowhead	909-382-2600
North Shore (seasonal) - Lake Arrowhead	909-382-2600
Fishing	
Lake Gregory Regional Park	909-338-2233
Green Valley Lake	909-867-2009
Lake Arrowhead (private - no public fishing)	909-337-2595
Silverwood Lake	760-389-2281

LAKE GREGORY

San Bernardino County Regional Park
Nestled in the alpine forest of Crestline, CA, Lake Gregory is a 150-acre park surrounded by the San Bernardino mountains.

Lake Gregory offers:

- ▲ Year-round fishing
- ▲ Swimming
- ▲ Waterslides
- ▲ Aqua Cycles, Rowboat Rentals
- ▲ Paddleboard Rentals
- ▲ Hiking & Fitness Trails
- ▲ Sand Volleyball
- ▲ Basketball
- ▲ Picnic Areas



For weddings, meetings, reunions, & conferences
SAN MORITZ LODGE
at Lake Gregory
(909) 338-2233

Regional Parks county-parks.com (909) 38-PARKS

Snow Valley Mountain Resort
Snow Valley is 140 turns closer to fun!SM
Save your turns for the slopes and not the roads!SM

Snowboarding

Mini-Snowmobiles

Something for Everyone

Skiing

Snow Play

Present this map when purchasing tickets at Guest Services for a FREE Snow Valley Souvenir with each ticket purchase!

Snow Valley Mountain Resort is just 5 miles past Running Springs!

P.O. Box 2337 • 35100 Highway 18 • Running Springs, CA 92382
For additional information: Call us: (800) 680-SNOW or Visit us: www.snow-valley.com



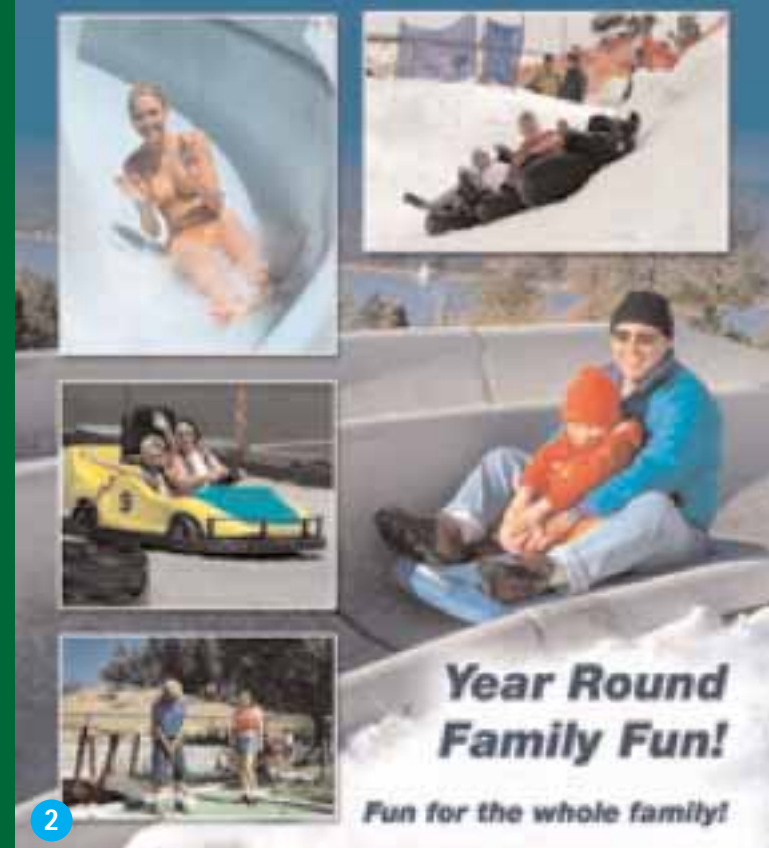
January Big Bear Eagle Tours - Big Bear Lake	July July 4th Fireworks & Old Miners' Days - Big Bear Lake Jamboree Days & Parade - Crestline/Lake Gregory Lake Arrowhead Village Entertainment Series - Lake Arrowhead Independence Weekend Celebration & Fireworks - Lake Arrowhead
February Big Bear Grand Tour of the Universe/Star Parties - Big Bear Lake	August Antique Car Show & Fun Run - Big Bear Lake Lake Arrowhead Village Entertainment Series - Lake Arrowhead
March Springfest & Brewfest - Big Bear Lake	September International Film Festival - Big Bear Lake, Trout Derby Series - Crestline/Lake Gregory, Lake Arrowhead Village Entertainment Series - Lake Arrowhead
April Birdwalks at WildWings - Big Bear Lake Trout Derby Series - Crestline/Lake Gregory	October Annual Oktoberfest - Big Bear Lake, Annual Oktoberfest - Lake Arrowhead Village
May Spring Air Fair - Big Bear Lake, Trout Derby Series - Crestline/Lake Gregory Lake Gregory opens for swimming, waterslide - Crestline/Lake Gregory Lake Arrowhead Village Entertainment Series - Lake Arrowhead	November Mountain Holiday Shopping Starts the Season Right - Big Bear Lake Holiday Lighting & Santa - Lake Arrowhead Village
June Open Sky Music Festival, Trout Derby Series - Crestline/Lake Gregory Annual Classic Wooden Boat Show - Lake Arrowhead Lake Arrowhead Village Entertainment Series - Lake Arrowhead Lake Arrowhead Rotary Art & Wine Festival - Lake Arrowhead	December Christmas in the Village & New Year's Down Slope Celebration - Big Bear Lake

For more information about dates, times and locations, call the Crestline Chamber of Commerce (909) 338-2706 or the Lake Arrowhead Chamber of Commerce (909) 337-3715.

FEARN'S 2010 SAN BERNARDINO, BIG BEAR LAKE, CRESTLINE & LAKE ARROWHEAD Traveler Info Guide
PUBLISHER: Anne M. Fearn
CORPORATE OFFICES: Certified Folder Display Service, Inc., 1120 Koshua Way, Vista, CA 92081 (760) 727-5100 FAX: (760) 727-1583 www.certifiedfolder.com
Neither Certified Folder Display Service, Inc. nor the San Bernardino, Crestline & Lake Arrowhead Traveler Info Guide make any representation expressly or implied as to the performance of the advertisers herein, or the accuracy of the facts herein. Certified Folder Display Service, Inc. and the San Bernardino, Crestline & Lake Arrowhead Traveler Info Guide jointly and severally disclaim any responsibility for acts or omissions of these advertisers. Copyright 2010 by Certified Folder Display Service, Inc. All rights reserved. No part of this Travel Guide may be reproduced without permission of the publisher. SBC&LA610

ADVERTISE IN THE 2011 EDITION!
For more info, contact:
DOUG DODSON 949.456.1456

Alpine Slide at Magic Mountain



Year Round Family Fun!
Fun for the whole family!

909.866.4626 • AlpineSlideBigBear.com
800 Wildrose Lane, Big Bear Lake, CA 92315

Big Bear Snowplay!
Snowmaking
Magic Carpet Lift (No more walking!)

(909) 585-0075
42025 Big Bear Boulevard • Big Bear Lake
www.BigBearSnowPlay.com

BIG BEAR CABINS
COZY HOLLOW LODGE



Cozy Cabins at Affordable Rates!

Select cabins have private in-room spas, perfect for relaxing after your Alpine adventure. Conveniently located around the corner from The Village and just down from the Alpine Slide, minutes from the ski resorts, the Lake and many hiking and biking trails.

40409 Big Bear Blvd., Big Bear Lake, CA
(800) 882-4480 • CozyHollowLodge.com **5**

"PRESERVING WILDLIFE HELPS HEAL THE HUMAN SPIRIT"




- **Wildlife Tours Saturdays at 1:00 by appointment only**
- **Rescue, rehabilitation and release of injured and orphaned forest wildlife**
- **Educational programs for schools, businesses and Ranch visitors**

P.O. Box 1782
Lake Arrowhead, CA 92352

East on Hook Creek Road
Left on Pineridge
Left on Pine (asphalt rd.)
to front gates
www.wildhaven.org **9**

education/tours: 909.337.1391 • rescue/rehab: 909.337.7389

Lake Arrowhead CHALETs
Timeshare & Vacation Rentals
P.O. Box 2293, 28200 Hwy 189, Lake Arrowhead, CA 92352
909.337.0457



lakearrowheadchalets.net • lachalets@verizon.net **6**

Your Adventure in the Treetops Awaits!

Experience high-speed runs in the beautiful mountain terrain! Our expert staff of tour guides show you how to have the most fun ziplining Big Bear.

Everything you need to zipline is provided

- Off-road Safari Jeep takes you 2 miles deep into the forest
- 9 line zipline course flying over the treetops
- Fun, rickety suspension bridge included in zipline course

Join us year-round! Whether you love warm weather or cold, **Action Zipline Tours** is your ticket to fast and furious fun!

Bring Your Nerve...and we'll show you how to test it!

10% OFF with this ad
Please bring in this ad with you for discount!

ACTION
ZIPLINE TOURS

41647 Big Bear Boulevard
Big Bear Lake, CA 92315
909-866-0390
actionziplinetours.com **1**



OFFICIAL STATE Visitor CENTER

CALIFORNIA WELCOME CENTER SAN BERNARDINO

Locations Throughout California

Open 7 Days-A-Week

Serving Thousands of Visitors Each Year

Providing Helpful Visitor Information and Services

Friendly and Well-Trained Staff

Conveniently located just off Interstate 10, the California Welcome Center San Bernardino can be found at 1955 Hunts Lane, Suite 102.

For more information, please call 800-867-8366 or visit us on the web at

visitcwc.com **4**

- S U P P O R T T H E S E A D V E R T I S E R S**
- 1 Action Zipline Tours**
41647 Big Bear Boulevard
Big Bear Lake
(909) 866-0390
www.ActionZiplineTours.com
 - 2 Alpine Slide at Magic Mountain**
800 Wildrose Lane
Big Bear Lake
(909) 866-4626
www.AlpineSlideBigBear.com
 - 3 Big Bear Snowplay**
42825 Big Bear Boulevard
Big Bear Lake
(909) 585-0075
www.BigBearSnowPlay.com
 - 4 California Welcome Center San Bernardino**
1955 Hunts Lane
Suite 102
San Bernardino
(800) 867-8366
www.visitcwc.com
 - 5 Cozy Hollow Lodge**
40409 Big Bear Boulevard
Big Bear Lake
(800) 882-4480 or (909) 866-9694
www.CozyHollowLodge.com
 - 6 Lake Arrowhead Chalets**
Lake Arrowhead Village
28200 Highway 189
Suite F 240-17
P.O. Box 2293
Lake Arrowhead
(909) 337-0457
www.lakearrowheadchalets.net
 - 7 Lake Gregory Regional Park**
24171 Lake Drive
Crestline
(909) 38-PARKS (72757)
San Moritz Lodge:
(909) 338-2233
www.county-parks.com
 - 8 Snow Valley Mountain Resort**
35100 Highway 18
P.O. Box 2337
Running Springs
(800) 680-SNOW (7669) or
(909) 867-2751
www.snow-valley.com
 - 9 Wildhaven Ranch**
P.O. Box 1782
Lake Arrowhead
(909) 337-1391 or (909) 337-7389
www.wildhaven.org